

# BROOK TAVERNER

SINCE 1912

## CASUALS & SEPARATES TWEED

### MEN'S ROCKWOOD WAISTCOAT - 1859



#### DESCRIPTION

Notch lapel, 5 button front, 2 welt pockets, lining back with adjuster.

**COMMODITY CODE:** 62113390000

#### FABRIC SPECIFICATION

##### Composition:

40% Polyester, 40% Wool, 20% Mixed Fibres with Teflon finish

**Weight:** 325g/m / Midweight

**Protection:** High Level of Stain Resistance

#### SIZES

S 34 - 36

M 38 - 40

L 42 - 44

XL 46 - 48

2XL 50 - 52

Centre back length at size M = 62cm

#### COLOURS

Available in 3 fabric colours:

A - Navy Herringbone

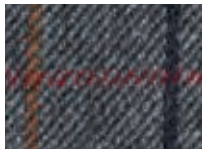
B - Navy Check

E - Grey Brown Check

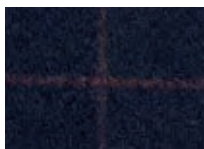
A



E



B



#### WASHCARE INSTRUCTIONS



Dry Clean  
Only



STANDARD  
100



#### GARMENT MEASURED FLAT & FASTENED (CM)

Size	S	M	L	XL	2XL
1/2 Chest	48.8	53.8	58.8	63.8	68.8
Centre Back: Regular	60.8	62	63.2	64.4	65.6

Working, together.

[www.brooktaverner.com](http://www.brooktaverner.com)